

Lucecco Group

Company profile

Bringing **power** to **life**

www.lucecoplc.com

LUCECO
GROUP



LUCECO 
G R O U P

Luceco is a group of companies who manufacturer and distribute high quality and innovative LED lighting products, electrical and wiring accessories, EV chargers and portable power products for a global customer base.

With over 75 years' experience, the Luceco Group brands of Luceco Lighting, DW Windsor, Pulsar, Kingfisher, Urban Control, BG Electrical, BG Sync EV, Masterplug and Ross are market leaders in lighting and in key electrical categories.

The global lighting brands from Luceco Group are market leaders in the projects and trade segment. and our reputation is based on the reliability and functionality of our innovative products. By offering market leading warranties, technical support, dedicated customer service and marketing backup, we aim to make it easy for customers to specify and install sustainable lighting.

The teams behind Luceco have over 100 years combined lighting industry experience gained over disciplines such as product design, development, testing and product management. This enviable expertise coupled with the group resources mean that Luceco have the knowledge and ability to be at the forefront of LED lighting technology.

Luceco believes that we have a responsibility to care for and protect the environment in which we operate. We are fully committed to improving environmental performance across all of our manufacturing and other business activities, continually looking for new methods and materials to provide environmentally friendly solutions.



Group global sales in excess of
£230m



5000+ SKU
Product Portfolio



20,000m²
Distribution facility located
in Telford & Mansfield



125,000m²
Manufacturing and assembly
located in Hodesson, Mansfield in
UK & overseas



2000
Workforce



75
Years in Business



• Global integrated IT system
• Flexible distribution model



Continually evolving product
ranges aligned to market trends



Worldwide

Sales Coverage

With offices in London, Jiaxing, Barcelona, Dubai and Mexico we offer sales and support to European, Middle East, Africa, South America, USA & Asia Pacific regions. The group lighting manufacturing facilities situated in Hoddesson & Mansfield, UK and offers 52,000 m² of manufacturing, assembly, distribution and sales support, with all of our electrical manufacturing based at our 73,000 m² manufacturing facility in Jaixing, China.



Our brands

at a glance



Luceco Lighting provides commercial and domestic lighting solutions, using energy saving and environmentally friendly LED lighting. Established in 2013, to address the rapidly growing LED lighting market, Luceco has rapidly established itself as one of the leading brands for professional lighting in the UK.



DW Windsor is a service-led manufacturer of high-quality lighting equipment, designed for the global specification market. As outdoor lighting specialists, DW Windsor's extensive portfolio of luminaires are engineered to offer outstanding quality, performance and longevity.



Urban Control creates connected places using smart technologies that add digital intelligence to infrastructure assets. Offering world-class software, market-leading hardware and advanced network capabilities, Urban Control develops scalable, data-driven solutions that save money, reduce carbon and help improve the quality of life in urban environments.



As a leading architectural lighting manufacturer, Pulsar develops high quality luminaires and control systems that bring architecture to life with light. Since the company's inception, its focus has been on harnessing advancements in high-power LED technology to deliver a range of specification-grade, dynamic lighting products.



Kingfisher Lighting is a nationwide UK supplier of exterior lighting products, including LED luminaires, high-mast and street lighting systems and controls, as well as a provider of installation and maintenance services.



BG is a wiring accessory brand, serving the professional electrical trade and specialists. Established in 1941, it is a well-respected brand and leader in the UK market. The business's growth is driven by product innovation, range expansion and activity levels in the construction and house-building markets.



Acquired by Luceco Group in March 2022, BG SyncEV produces easy to install and commission EV chargers for the residential and commercial sectors. BG SyncEV is investing heavily in new product development and technical support, to meet the future needs of the EV market.



Founded in 1988 Masterplug is the UK market leader, serving retailers and trade wholesalers. We also offer a subrange under the Pro-XT trademark and supply a limited number of unbranded products to major customers.



Ross is a leading manufacturer of premium TV wall mounts and AV accessories. We service all product areas from entry level through to premium with a full range of products to suit every requirement and usage case scenario. All models are produced in-house at our industry leading manufacturing facility and are sold worldwide through a growing network of trade and retail partners.



Nexus is a rapidly growing designer, manufacturer and distributor of design-led, innovative Commercial Power products for a Global customer base. We supply high quality power and data distribution systems to Specifiers, Furniture Manufacturers & Distributors, Architects, Construction, Project Developers, Facilities Management & Interior Designers.

Group Brands





Overview

Luceco Lighting provides commercial and domestic lighting solutions, using energy saving and environmentally friendly LED lighting. Established in 2013, to address the rapidly growing LED lighting market, Luceco has rapidly established itself as one of the leading brands for professional lighting in the UK.



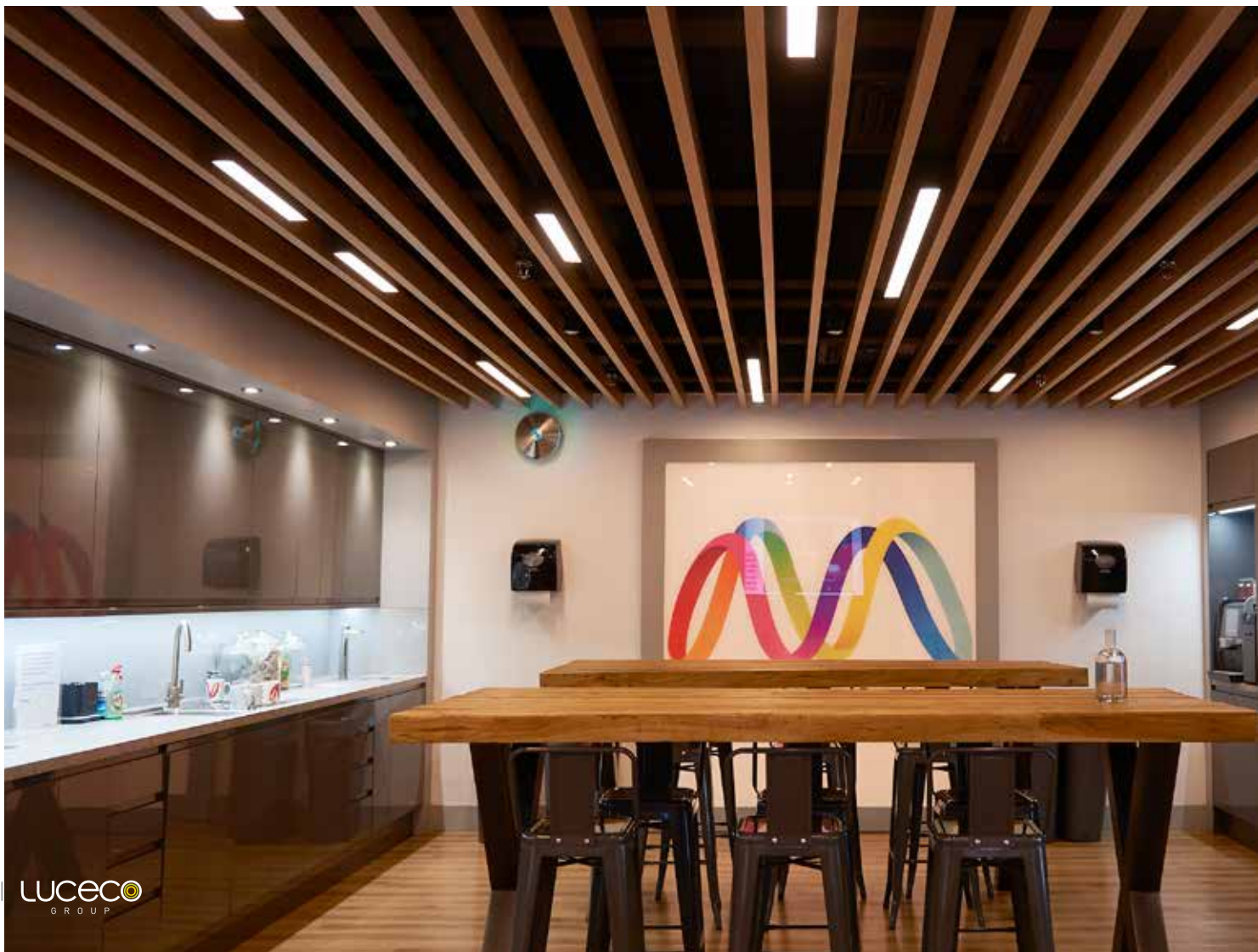
Commercial Office



Industrial



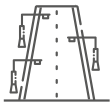
Residential





Overview

The founding company within the Group, DW Windsor is a service-led manufacturer of high-quality lighting equipment, designed for the global specification market. As outdoor lighting specialists, DW Windsor's extensive portfolio of luminaires are engineered to offer outstanding quality, performance and longevity.



Street Lighting



Outdoor Lighting



Architectural Lighting





Overview

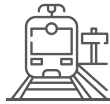
Urban Control creates connected places using smart technologies that add digital intelligence to infrastructure assets. Offering world-class software, market-leading hardware and advanced network capabilities, Urban Control develops scalable, data-driven solutions that save money, reduce carbon and help improve the quality of life in urban environments.



Connected Lighting



Connected Highways



Connected Transport





PULSAR

Overview

As a leading architectural lighting manufacturer, Pulsar develops high quality luminaires and control systems that bring architecture to life with light. Since the company's inception, its focus has been on harnessing advancements in high-power LED technology to deliver a range of specification-grade, dynamic lighting products.



Architectural Lighting



Dynamic Lighting



Control Systems



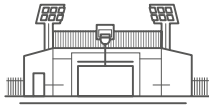


Overview

Kingfisher Lighting is a nationwide UK supplier of exterior lighting products, including LED luminaires, high-mast/sports facilities and street lighting systems and controls, as well as a provider of installation and maintenance services.

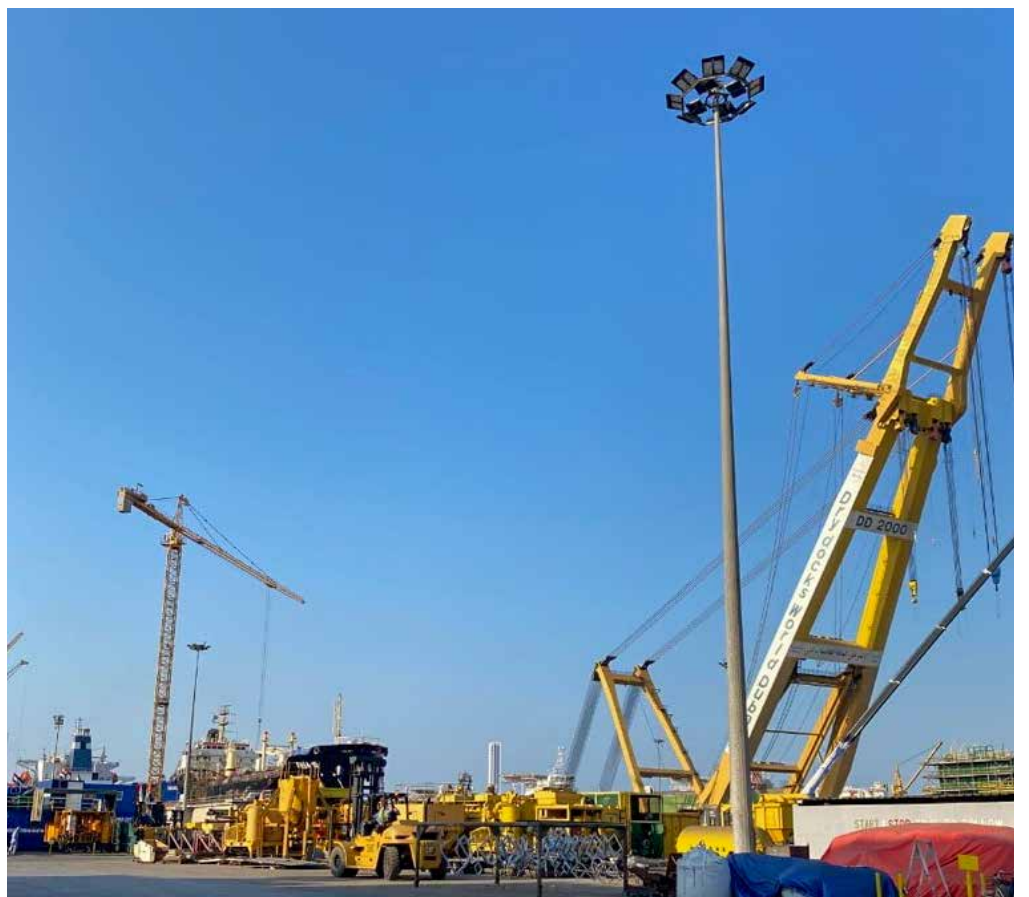


High-Mast Lighting



Sports Lighting







Overview

BG Electrical is a market leader in high quality and innovative wiring accessories, circuit protection and portable power. With over 75 years of experience, BG Electrical has gained an invaluable reputation.







Overview

Acquired by Luceco Group in March 2022, BG SyncEV produces easy to install and commission EV chargers for the residential and commercial sectors. BG SyncEV is investing heavily in new product development and technical support, to meet the future needs of the EV market.







Overview

Masterplug is at the forefront of interior and exterior portable power solutions, for the trade and in the home. Established in 1988, Masterplug is the market leader and is one of the worlds most recognideable brands in portable power.



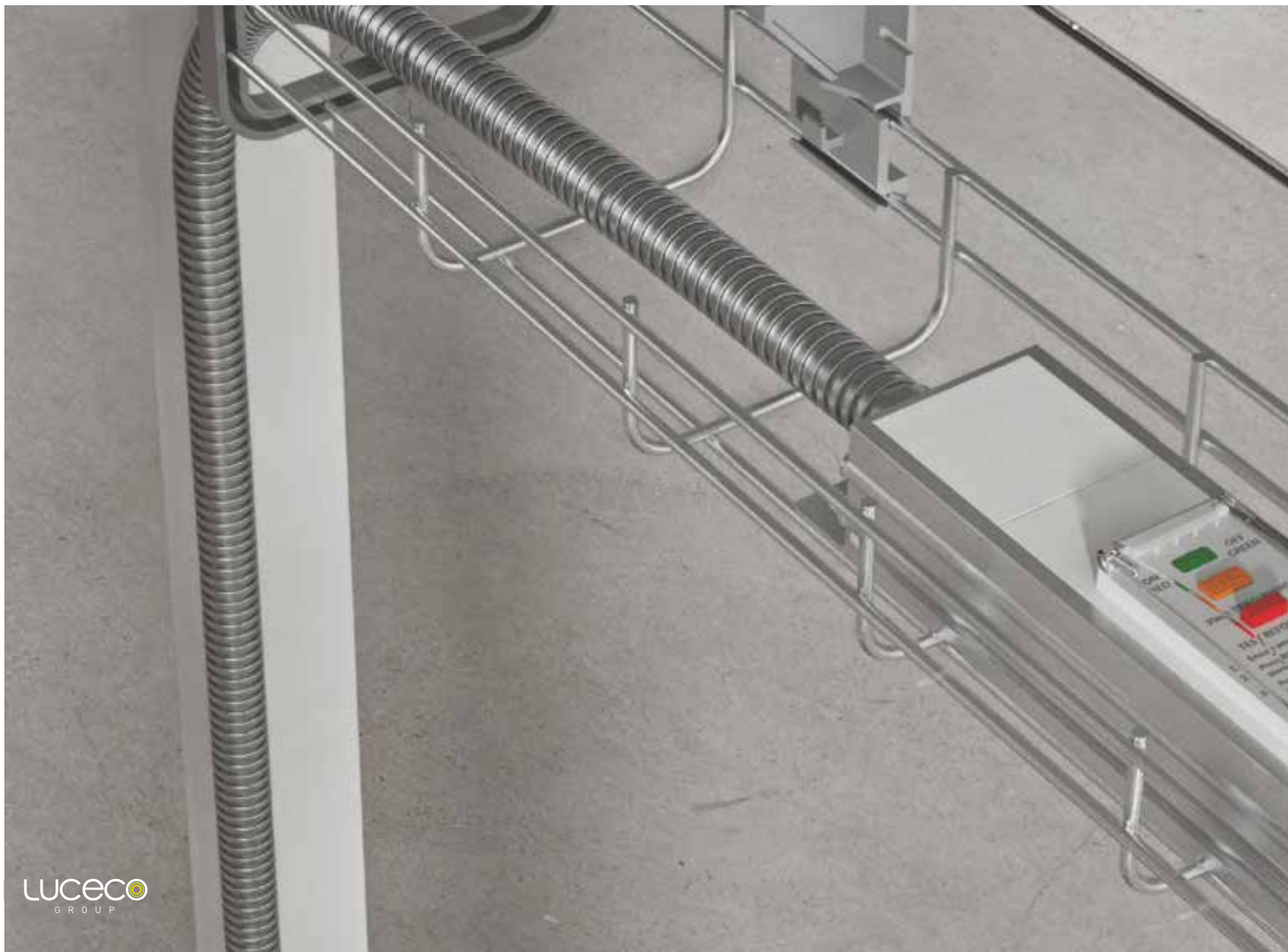


nexus

commercial power and technology

Overview

Nexus is a rapidly growing designer, manufacturer and distributor of design-led, innovative Commercial Power products for a Global customer base. We supply high quality power and data distribution systems to Specifiers, Furniture Manufacturers & Distributors, Architects, Construction, Project Developers, Facilities Management & Interior Designers.







Overview

Ross is a leading manufacturer of premium TV wall mounts and AV accessories. We service all product areas from entry level through to premium with a full range of products to suit every requirement and usage case scenario. All models are produced in-house at our industry leading manufacturing facility and are sold worldwide through a growing network of trade and retail partners.





Products & Technologies



Advances in LED technology have meant that in addition to higher quality light, customers can also reduce costs and make energy savings, as well as take advantage of new opportunities in both luminaire design and functionality. The convergence of lighting and smart IoT technologies has also opened up new possibilities in terms of data gathering and processing to identify and solve issues within our urban spaces.

We offer a broad selection of luminaires in a variety of styles to suit a wide range of exterior applications. From intelligent street lighting solutions to dynamic lighting equipment for architectural illumination, we can deliver products designed to complement any outdoor environment.

Commercial Lighting

Recessed LED lighting for offices, classrooms and other commercial environments with our luminaires playing a pivotal role in the overall performance of the space. A complete range of flexible, high quality lighting and accessories suitable for all applications.



Sigma

High performing recessed luminaire specifically designed for low glare applications such as office environments, offering an efficacy of up to 133Llm/Cw



Epsilon

The Luceco Epsilon is a range of direct : indirect LED panels with Opal and Microprism options available.



Contour Recessed

The Luceco Contour Recessed range are a perfect linear lighting solution for recessed installations with a wide range of options available to suite any space.



Contour Octa

Suspended direct/indirect lighting system providing low-glare and soft lighting.



Leren

Leren is a continuous architectural lighting system featuring components manufactured with an extruded aluminium body to deliver robustness



Academy

A versatile and comprehensive surface linear range perfect for any environment and setting.

Industrial Lighting

Industrial lighting applications come in a variety of shapes and sizes. The type of lighting required is dependent on the ceiling height, area use and the environment. Our wide range of linear, highbay and lowbay lights offers multiple lumen outputs and lighting distributions, ensuring a suitable solution for all applications.



Luxbay Ultra

Unrivalled and undeniable power makes Luxbay ULTRA the number one choice for both performance and efficiency. With average efficacy ranging up to 175Llm/cW, not only is Luxbay ULTRA one of the most powerful industrial lighting series on the market, but it does so whilst keeping your energy costs at a minimum and reducing your carbon footprint.



Ceres

Ceres is a comprehensive range of industrial luminaires manufactured with a diecast aluminium housing which offers increased thermal performance. Lumen options range from 11000 to 35,500 in two, three or five rows of housing. With an IK10 rating and a lifespan of 100,000 hours, Ceres is built to last.



Calisto

The Callisto range offers a wide area lens distribution perfect for open area and sports environments



Elara

Discretely proportioned, yet deceptively powerful, Ren is a sophisticated range of bollards that is defined by its geometric design and excellent performance. Ren offers functional lighting for wayfinding with comfortable, ambient lighting for enhanced vertical illumination.



Titan 2.0

A highbay luminaire with a durable die-cast aluminium housing and a polycarbonate lens



Climate

Combining advanced multi-channel LED technology and precision optics, Pulsar's Fira range has been designed to deliver exceptional light quality and performance. Fira is designed to last and has been constructed to withstand the toughest environments.

Wireless Lighting

Controls

Our standalone emergency lighting testing (ELT) solution provides a new level of automation and wireless convenience. Suitable both for dedicated emergency lighting and combined / dual-function emergency luminaires, this low-maintenance testing feature delivers full regulatory compliance and Bluetooth mesh wireless excellence.

LUCECO
PLATFORM



Wireless Office Sensor

- Presence detection via passive IR element
- Detection height up to 4 meter
- Qualified Bluetooth mesh enabled by Silvair
- Large motion detection range
- Suitable for up to 8 DALI-2 LED drivers (Part – 207) in broadcast mode



Wireless High Bay

- Presence detection via passive IR element
- Detection height up to 14 meter
- Qualified Bluetooth mesh enabled by Silvair
- Large motion detection range
- Suitable for up to 8 DALI-2 LED drivers (Part – 207) in broadcast mode



Wireless Long Range

- Ceiling Mounted Directional Long Range PIR Sensor
- Large detection range of up to 25m
- Designed to plug into ceiling socket accessory
- Qualified Bluetooth mesh enabled by Silvair



Wireless Batteryless

- Based on the Bluetooth low energy push button transmitter PTM 215B
- Switch frame could be replaced by the frames of certain other manufacturers



Bluetooth™ Mesh Zhaga

- A Bluetooth Mesh SILVAIR enabled DALI outdoor lighting controller
- This controller has a built-in light sensor for photocell operation, a motion sensor input for dynamic lighting and can run onboard lighting schedules with dimming profiles.
- Extremely robust, reliable, secure and has an impressive wireless outdoor range that is extended as more lighting controllers are introduced in the mesh, acting as repeaters.



Wireless Gateway

- Scheduling (available by default) – Scheduling changes in scenes and lighting control scenarios (for example occupancy sensing, daylight harvesting) for specific times or days.
- Energy and occupancy monitoring (additional paid service. Visualizing energy use and occupancy via the Silvair web app; Downloading energy and occupancy via the Silvair web app and cloud-based API.

Architectural Lighting

Our architectural lighting range blends modern, creative styling with high levels of performance to enhance any outdoor environment. From road lights to floodlights, our contemporary luminaire designs allow customers to choose a lighting solution that blends in, or one that stands out to truly make a statement.



Sephora

Sephora's flexible range of styles, light sources and mounting configurations allows for a unified aesthetic across multiple applications. Sephora's understated design and excellent performance makes it ideal for busy traffic routes and public spaces alike.



Milano

With clean lines and a modern design, Milano is defined by its elegant proportions and quality construction. Designed to enhance urban spaces, from city centres to car parks, Milano provides excellent performance whilst perfectly complementing surrounding architecture.



Silka

Silka is a professional light column that provides dynamic architectural lighting as well as opportunities beyond illumination. The range is available in multiple column and glazing configurations for decorative public realm illumination, orientation and waymarking.



Ren

Discretely proportioned, yet deceptively powerful, Ren is a sophisticated range of bollards that is defined by its geometric design and excellent performance. Ren offers functional lighting for wayfinding with comfortable, ambient lighting for enhanced vertical illumination.



Garda

Garda is a bespoke, award-winning illuminated handrail that combines style and performance to deliver high quality lighting for internal and external applications. The versatile and virtually maintenance-free solution can be tailored to individual project requirements.



Fira

Combining advanced multi-channel LED technology and precision optics, Pulsar's Fira range has been designed to deliver exceptional light quality and performance. Fira is designed to last and has been constructed to withstand the toughest environments.

Functional Lighting

Our Functional lighting range offers advanced, effective and practical lighting solutions for a wide range of applications. With flexible options to suit any outdoor requirement, the range provides high performance, efficient lighting for everything from pedestrian areas and car parks to residential roads and motorways.



Kirium Eco

Our most competitive range of LED street lighting luminaires to date. Kirium Eco is Smart City ready and offers dedicated optical solutions for roads, footpaths and pedestrian crossings. The range is highly efficient and boasts minimal whole life costs.



Kirium Bollard

A range of classically styled, vandal resistant IK10 bollards with market-leading performance. Provides illumination with purpose, promoting safe navigation. Available in two sizes and two styles to complement a range of applications from pathways to car parks.



Sabre

A slim, low glare range of performance floodlights, Sabre delivers market-leading efficacy across a wide range of applications. Featuring ultra-efficient optics, Sabre is available in three sizes plus an RGBW version for dynamic, colour-changing lighting.



Kova

Kova is a family of highly efficient anti-vandal luminaires that offers extreme performance for tough applications. Available in a variety of styles and sizes, Kova is fabricated from stainless steel and polycarbonate to provide a certified IK10+ rating.



Kirium Pro

The most comprehensive, flexible and future-proof luminaire we've ever developed. Kirium Pro is available in five sizes with 23 standard optical solutions, offering precise lighting control, low whole life costs and leading energy efficiency.

Heritage

Lighting

Our Heritage range offers traditional styling and craftsmanship, with superior light quality and energy efficiency from the latest LED technology. Timeless, authentic designs and award-winning optical performance make our heritage luminaires ideal for a wide range of applications from residential to public realm.



Strand

One of our most popular heritage products, Strand is a bracket-mounted luminaire available in four proportionally identical sizes and a choice of two brims. Suitable for applications from car parks to main roads and city centres.



Knightsbridge

Our six-sided Knightsbridge luminaire is wider than most heritage designs and so can be mounted higher without losing its sense of proportion. It's offered in two sizes with a range of LED light sources to suit both performance and comfort applications.



Windsor

Often imitated, never bettered. Our signature luminaire, Windsor, combines timeless design with award-winning optical performance. Handcrafted using traditional methods, Windsor is offered in three sizes and a range of LED light engines.



Waterford

Waterford's concentrically stepped brim and rounded, domed canopy creates another timeless classic. With control gear housed in its base for extra robustness, Waterford is ideal for multiple applications from housing estates to small car parks and amenity areas.



Ely

Traditionally proportioned with a clean profile, Ely offers the performance and flexibility of our Strand luminaire but redesigned to sit more comfortably within modern architectural locations. Ely is also easy to maintain thanks to its over-centre latches for toolless entry.

Lighting Control Solutions

Lighting controls can greatly enhance any environment in which they are installed. From reducing energy consumption to delivering lower maintenance and operational costs, utilising a lighting control system can provide many benefits. We offer a range of solutions from simple to advanced, designed for a variety of applications.



Stand-alone controls

Providing direct control in its simplest form, stand-alone systems are reliable and straightforward, utilising electronic devices such as photocells and presence detectors to manage the lighting. With full manual and dependable control, including factory-set dimming, the benefits associated with this system include improved security and safety of your building, automatic daylight dimming, PEC control with pre-set dimming regimes and an eco-friendly on/off motion detector.



Local network solutions

Local network solutions provide a flexible, cost-effective solution that can be adapted on-site via bluetooth or NFC without requiring specialised commissioning or central control modules. Enabling one-to-one control, or the opportunity for luminaires to communicate together in a small, closed wireless network, this system is compatible with luminaires using sensor-ready drivers and can be further enhanced through features such as dimming schedules of dusk/dawn switching.



Wide network solutions

Built on robust wireless communication networks and connected IoT devices, the wide network is a state-of-the-art remote CMS solution which provides the foundations to build connected spaces through strategic flexibility. Real-time control, connected assets, monitoring, metering and dynamic management of lighting infrastructure are all enabled by CMS. Wide network control offers scalable solutions equally suited to both large towns or cities and small private networks, such as university campuses.

Smart Technology Solutions

Urban Control adds digital intelligence to connected spaces. We use smart technology and real-time data to improve the living environment; making key aspects of the urban world measurable and controllable. We employ our smart lighting networks as the foundation for a range of Internet of Things (IoT) solutions.



Connecting your assets at any scale

Our robust standards-based mesh network is proven across the world in millions of devices. Offering unmatched performance, even in the most challenging operating environments, it provides a strong, flexible foundation for a wide range of smart technology applications. Using a combination of connected streetlights and sensor devices, we're able to create a complete canopy of high-speed network coverage over an entire city. And for smaller campus deployments we use NB-IoT, the latest cellular standard.



Comprehensive sensing of the urban environment

A wide range of sensors are available, either as standalone devices or integrated within our luminaires. These include air quality, temperature, noise, weather and road surface temperature sensors. We use cameras to measure the density, speed and direction of road traffic. We monitor every element of the lighting infrastructure and can continuously assess the condition of concrete assets. We also offer occupancy sensors that can anonymously track the movement of people within a space.



UrbanMaster® for asset visibility and control

UrbanMaster, our scalable central management system (CMS), enables you to understand and interact with map-based sensor data in real-time, giving you the power to make the right decisions. Available as a cloudbased product, the fully flexible platform provides dashboards for analysing and visualising asset data, and alerts when action is required. UrbanMaster also enables automatic control, such as changing lighting levels dynamically in response to traffic or pedestrian behaviours.

High-mast/Sports Lighting

With over 25 years experience in exterior lighting, we know we can find the right solution for you. We have a team of knowledgeable people and a wide range of great quality and performance lighting products. Applications include high mast & flood lighting, sports facilities, car parks, distribution & warehousing and urban landscapes.



Zactis

Zactis is a high-performance flat-to-ground LED flood light perfect for sports, high mast and area applications. As well as facilitating easy installation and maintenance, the sleek, low-profile design, reduces the load together with decreasing windage.



Viva-City Pro

A modular, slimline, performance street lantern with improved efficacy and output. Viva-City Pro offers a choice of optics with asymmetrical distribution including an area optic.



Amnis Flood

Our AMNIS flood is a powerful, high-performance luminaire, designed and engineered in the UK, offering a pitch perfect output and outstanding efficiency.



Cireco

Created with sustainability in mind, CIRECO has been designed surrounding the circular economy model and supports the ethos of 'reduce, reuse, recycle'. Utilising innovative LED technology this sleek luminaire is the perfect solution for illumination of street and pathway applications.

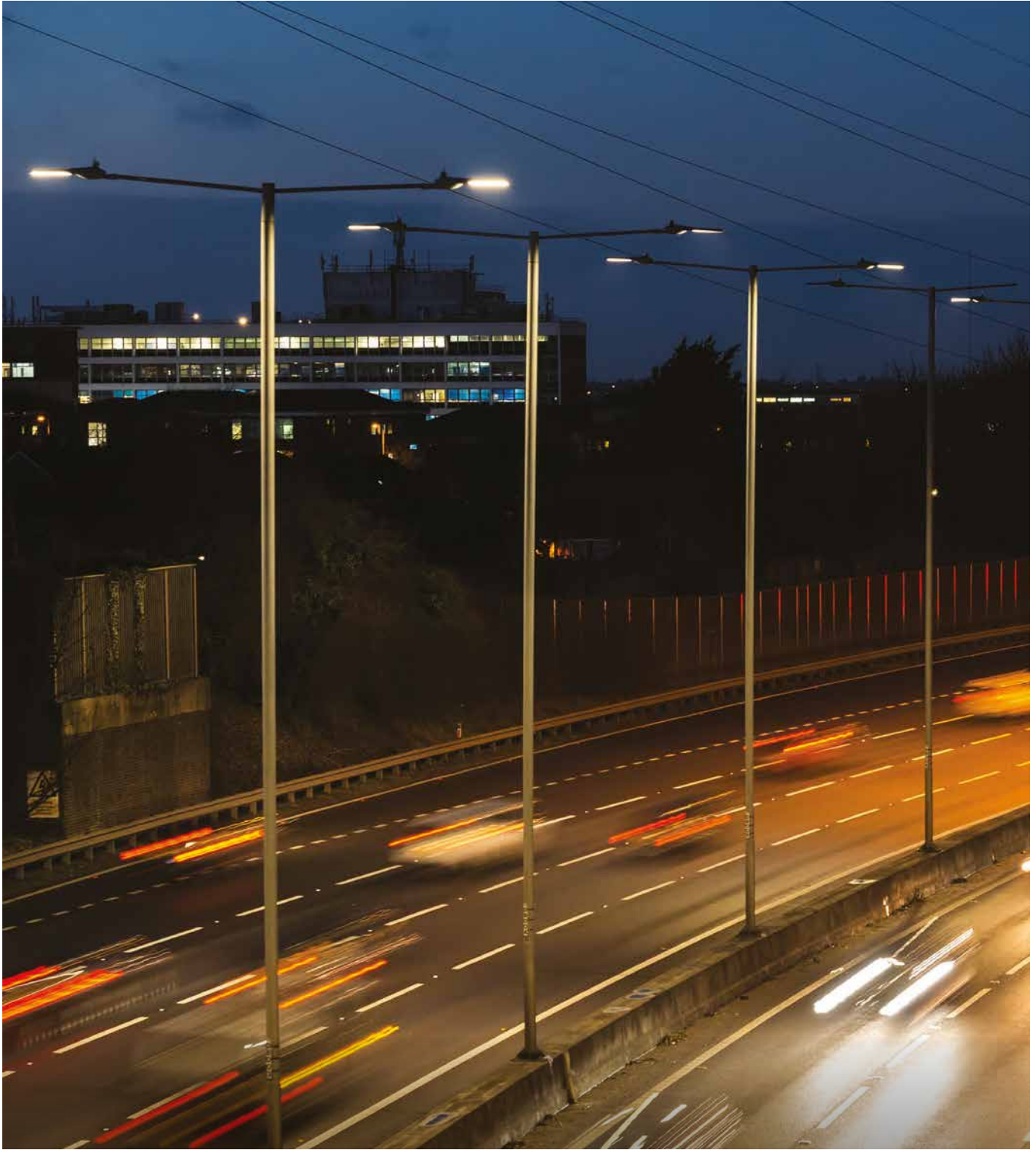
Market Segments



Light is an essential part of the world around us. The right exterior lighting can make urban environments safer and more welcoming, enhance the impact of architecture, convey the identity of a place and even positively influence behaviour.

With an extensive range of lighting products available in a variety of styles and a choice of light distributions, we can provide solutions to meet the needs and purposes of virtually all external environments.





Infrastructure & Highways

Our robust standards-based mesh network is proven across the world in Ensuring that road users have the necessary visibility to remain safe is paramount to the design of our lighting systems for infrastructure and highways. Our products are designed to deliver optimal lighting conditions for motorists whilst remaining energy-efficient and cost-effective.



Rail & Transportation

From the car park to the platform, we offer a variety of products to provide effective and responsive illumination for rail or bus stations. Our extensive catalogue of lighting systems will ensure passengers and staff remain as safe and comfortable as possible.





Public Realm & Open Spaces

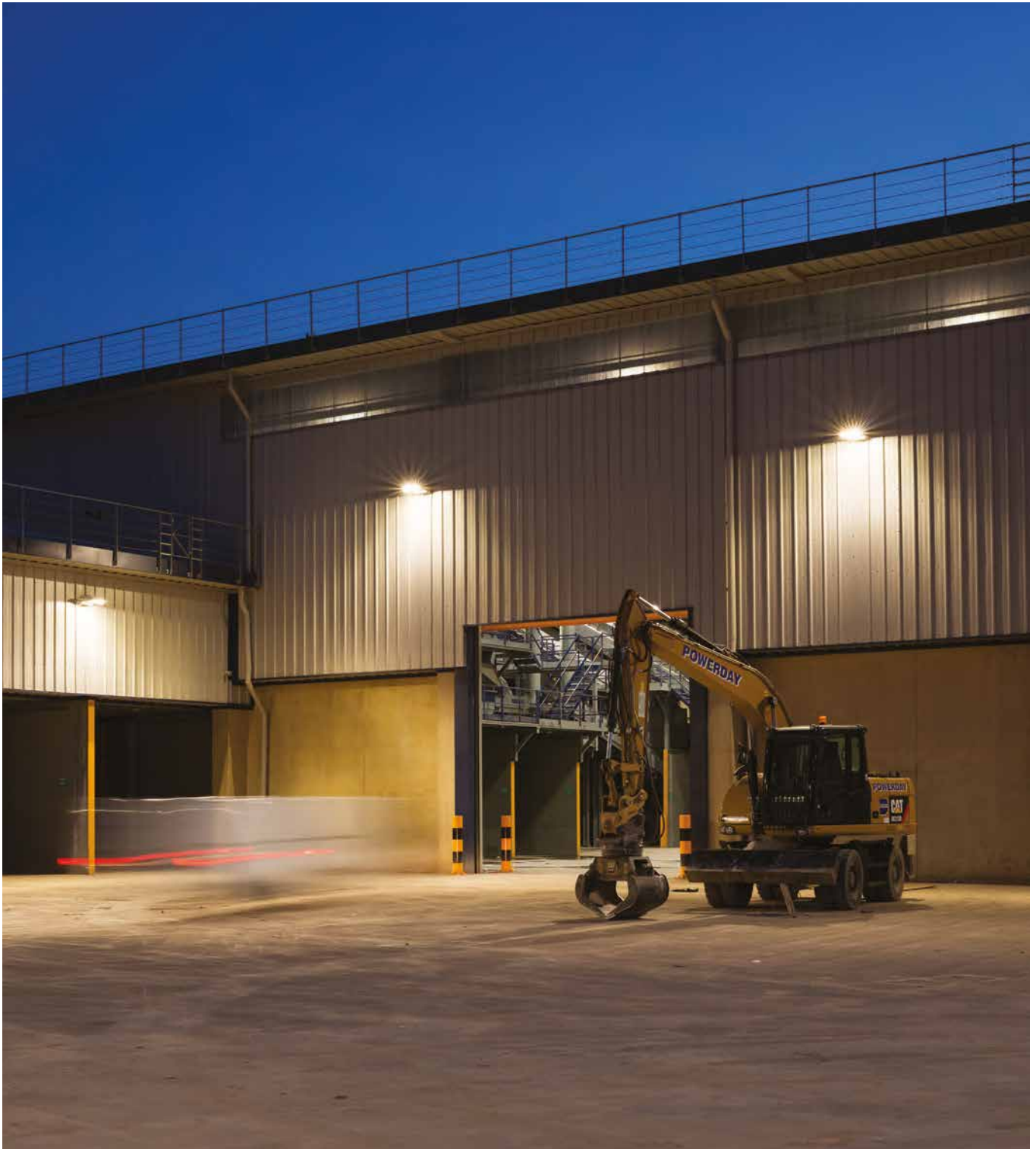
Sensitively designed lighting schemes can dramatically enhance the aesthetic appeal of public spaces. We offer products that can draw attention to local architecture; emphasising features and adding a sense of drama, while also elevating the space and making it more inviting.



Amenity & Architectural

Incorporating feature lighting into built environments has the potential to dramatically enhance the visual appearance of any location. All spaces, from car parks to building façades can greatly benefit from the dynamic lighting our range of products has to offer.





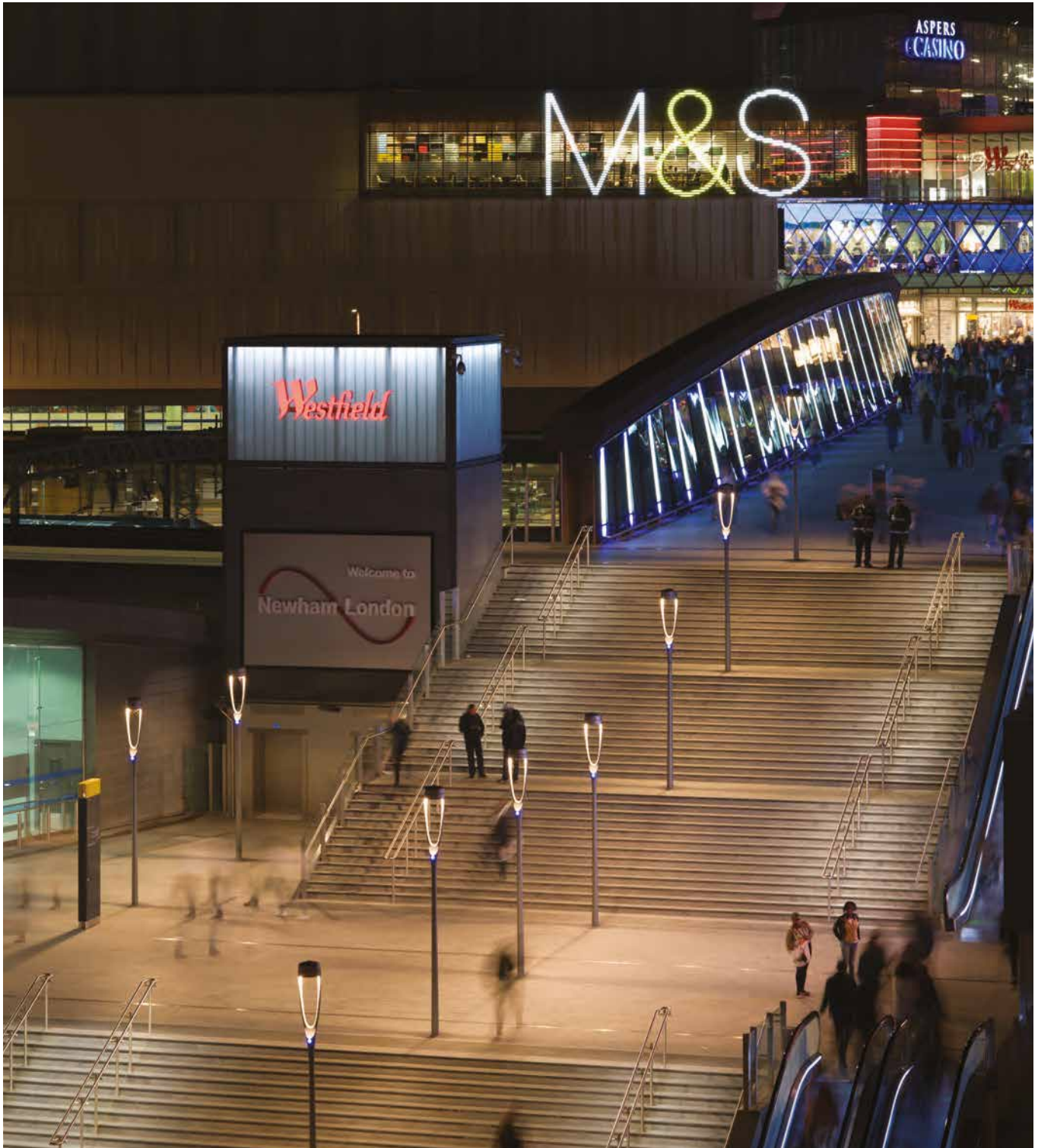
Industrial & Area

For industrial environments, lighting is crucial to ensuring the safety of staff; improving security by deterring intruders and increasing the efficiency of a site. Our extensive product range includes lighting systems designed specifically to meet these important requirements.



Retail & Commercial

Choosing lighting systems that enhance the character and personality of retail locations can greatly benefit the public perception and appeal of a space. Our product collection can help make retail environments more inviting which, in turn, encourages increased customer footfall.





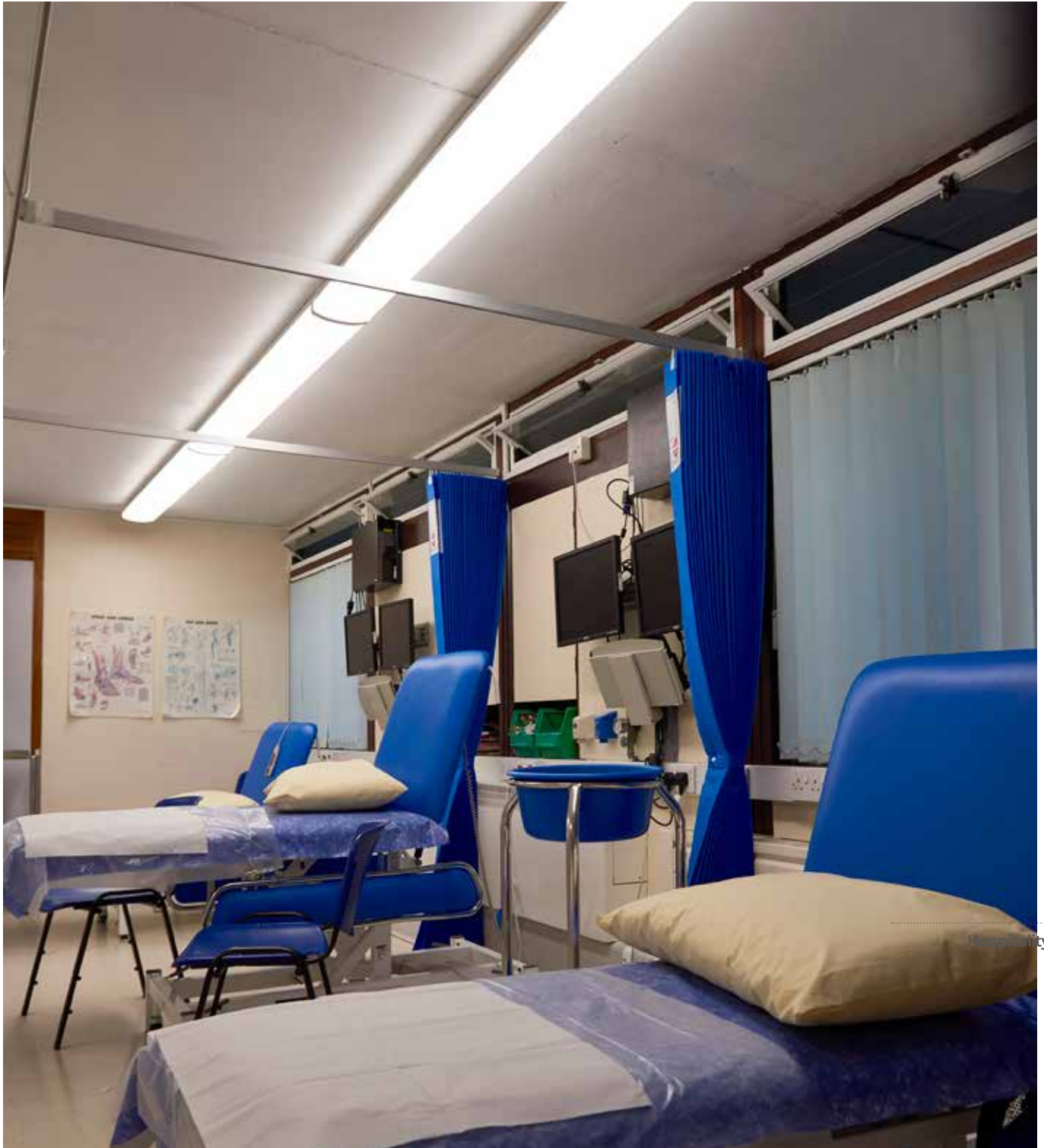
Education

Lighting in schools and colleges should create an environment to support educational objectives and promote student comfort. Concentration is essential to learning and a well-lit environment has been proven to stimulate and encourage students to be receptive and motivated. The aim of lighting in schools and colleges is not just providing illumination but to contribute towards the well-being of the students and teaching personnel alike.



Healthcare

Primary spaces in healthcare environments are often open plan to maximise on future flexibility in terms of cellular space and relocatable walls. Lighting levels will vary dramatically depending on the tasks being executed and the natural day light available. A well-lit environment will stimulate healthcare professionals and improve the feeling of well-being for patients, as well as visitors in communal areas, waiting rooms and cafés.



Hospitality

Accreditations



Carbon Trust

The Carbon Trust is a world-leading organisation helping businesses, governments and the public sector to accelerate the move to a sustainable, low carbon economy through carbon reduction, energy-saving strategies and commercialising low carbon technologies. As a Carbon Trust Accredited Supplier, Luceco joins a market-leading scheme for high quality energy efficient equipment and renewable technology suppliers. It provides independent validation and recognition of a supplier's skills and services – a much needed and trusted quality standard in a crowded and fast growing market place. Accredited Suppliers must meet or exceed criteria set by the Carbon Trust, designed to examine their capability to deliver thoughtful, well-designed, energy efficient and renewable energy systems.



Lighting Industry Association

The Lighting Industry Association is the largest lighting industry trade association in Europe. Their mission is to strengthen the industry and promote the benefits of good quality lighting by representing all aspects of UK, EU and international legislation and standards at the highest level whilst protecting the interests of both the public and its members.

www.thelia.org.uk



ENEC Testing

As part of our product development and quality processes, Luceco luminaires have been tested to ENEC standards. This stringent process involves independent third party testing of the luminaires, conducted by a European test house organisation and also the inspection and audit of our manufacturing facility. ENEC approval provides full confidence in Luceco products meeting all the relevant safety standards from when they are introduced and also ongoing as the products and audits are re-examined on a bi-annual basis.

Warranties

2, 3, & 5 Year Standard Warranty

Luceco offers a standard 2, 3 or 5 year warranty for all products. If a product was to fail during this period, Luceco will arrange for the product to be repaired or replaced with an equal or substitute product at our discretion.

5 Year Standard Warranty

Luceco offers a standard 5 year warranty for all project related products. If a product was to fail during this period, Luceco will arrange for the product to be repaired or replaced with an equal or substitute product at our discretion.

Emergency Control Gear Warranty

Luceco offers the same warranty on the emergency module as the luminaire, providing the luminaire is installed in a suitable environment. The battery being a consumable part is subject to a different warranty. Standard Luceco Emergency batteries have a 4 year design life and a 2 year warranty. Improved battery warranties up to 4 years are available by utilising a Lithium battery for more information speak to a Luceco Project Manager.

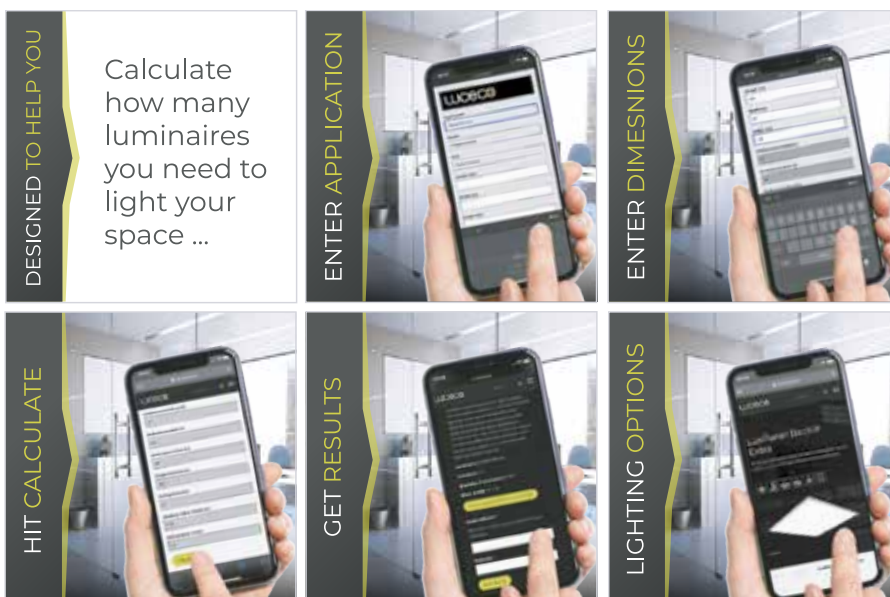
1 Year On Site Warranty (UK Only)

On project specific luminaires, should a product that has been correctly specified, professionally installed by a registered trades person and operated in accordance with the specified parameters, fail during its first year of installation, Luceco will arrange for the product to be repaired or replaced at our discretion.

LUCECO
LIGHTING
CALCULATOR



www.luceco.com



UK

HEAD OFFICE

Email: info@luceco.com

Luceco plc, Caparo House
103 Baker Street, London
England, W1U 6LN

DISTRIBUTION CENTRE

Tel: +44 (0) 1952 238 100

Email: uk_sales@luceco.com

Luceco plc
Luceco Distribution Centre
Stafford Park 1, Telford
Shropshire, England, TF3 3BD

EUROPE

FRANCE

Email: fr_sales@luceco.com

ITALY:

Email: it_sales@luceco.com

SPAIN

Tel: +34 93 829 55 75

Email: es_sales@luceco.com

Nexus Industries LTD
C/ Bobinadora 1-5
08302 Mataró
Barcelona (SPAIN)

MIDDLE EAST & AFRICA

Tel: +971 4 609 1867

Email: mea_sales@luceco.com

Luceco Middle East FZCO
Bldg. 5EB, Office 342
PO Box 371128, DAFZA
Dubai, UAE

ASIA PACIFIC

JIAXING

Tel: +86 (0) 573 8357 0200

Email: asia_sales@luceco.com

No 1438, Jiachuang Road
Xiuzhou Industrial Park, Jiaxing
Zhejiang, China, P.C. 314031

HONG KONG

Email: hk_sales@luceco.com

UNITED STATES

Email: us_sales@luceco.com

MEXICO & LATIN AMERICA

Tel: +52 (81) 5000 9437

Email: ventas@luceco.com

Luceco México
AV Lázaro Cárdenas #318 int 201
Col Real San Agustín
San Pedro Garza García
N.L. Mexico CP 66278

TECHNICAL SUPPORT

Tel: (01952) 983 940

Email: technical@luceco.com

Lines open Monday to Friday
8.30am to 5pm, with answer
hone service outside these hours.

LUCECO
G R O U P

